

KestrelMet 6000
Cellular Weather Station
Instruction Manual



www.kestrelmet.com



Nielsen-Kellerman (NK) Family of Weather Brands

Whether for profession or passion, when the elements can affect the outcome, accuracy and accessibility are all that matter.

NK understands that you depend on accurate measurements to understand changing environmental conditions. The need for immediate and accurate weather data from monitoring devices that simply work is vital to taking action. Because knowing your conditions means making the right decision.



ambient weather



Kestrel[®]
Instruments



KestrelMet

Contents

Getting to Know Your KestrelMet 6000

Components & Hardware 5–6

Introduction 7

Getting Started with Your Weather Station

Station Siting & Setup 9–10

Unboxing 11

Activating Data Plan & Registering Online 12

Set Up & Installation

Assembling Weather Station 13–16

Confirming Online Status 17

Mounting 18–19

Powering Up 20

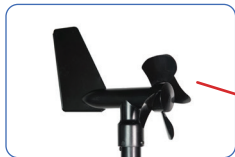
Product Safety & Information

Troubleshooting	21–22
Specifications	23–25
Product Safety	26
Compliance.....	27–28
Proposition 65 Warning	29
Warranty.....	30
Appendix 1: Tripod Mount.....	31
Appendix 2: Mono Mount.....	32
Appendix 3: Optional AG sensors	33
AG Sensors Station setup.....	34–35
Soil sensor array probe placement	36
Manuals and websites	37–38

Find additional product information, FAQs, technical support, instructional videos and more at kestrelmet.net/support

Getting to Know Your KestrelMet 6000

Components & Hardware:



Vane Anemometer



Anemometer Mast Extension



Rain Gauge



Bird Guard

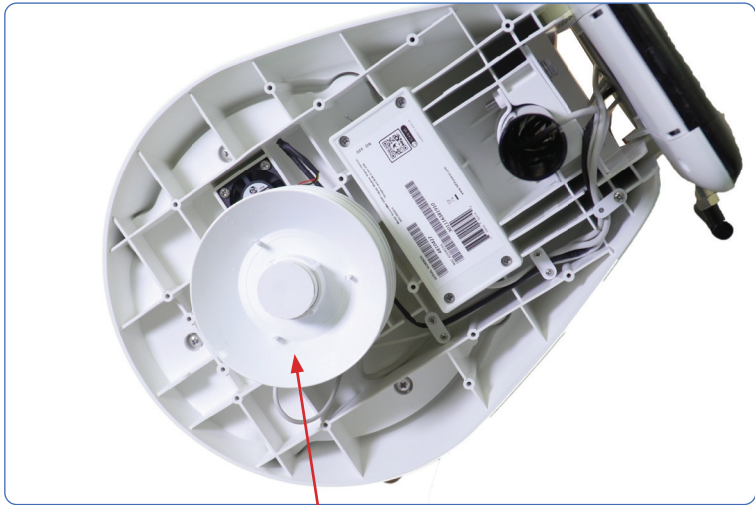


PV Power Panel



Station Base Assembly

Components & Hardware (continued):



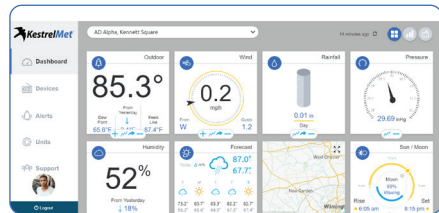
*Aspirated Temperature
and Humidity Sensors*

Introduction

You are minutes away from the ability to monitor weather with professional-grade accuracy anywhere, for any personal or professional reason.

The KestrelMet 6000 Cellular Weather Station delivers accurate, hyper-local weather information. It is lightweight, durable, easy to set up and quick to connect.

Your KestrelMet station is equipped with CAT/LTE-M and NB-IoT cellular connectivity (including one year of free data) that transports your weather data to a personal dashboard where you can view and share data, view history and graphs, and build reports. Set up your dashboard at **www.kestrelmet.net**. Refer to page 13 of this manual for further instruction.




View your KestrelMet 6000 weather station data at www.kestrelmet.net

Getting Started with Your KestrelMet 6000



IMPORTANT: Read through these instructions once before starting, and do the steps in the order presented:

1. **Plan your station location and mounting. Confirm you have purchased the correct mounting hardware (Tripod or Mono Mount, sold separately) for your chosen location.**
2. **Unbox the station**
3. **Register the station account**
4. **Assemble the station**
5. **Mount the station**
6. **View your data on kestrelmet.net**

 *See appendix 3 for assembly of optional AG sensors*

1 Station Siting and Setup

Where you install your KestrelMet 6000 can positively or negatively impact accuracy. Natural and artificial obstructions around the weather station, like trees or other structures, could skew the data. You can get more detailed station location and siting guidelines at kestrelmet.net/support

Location Considerations:

- » Your station requires direct sunlight to maintain the battery charge at a healthy level. Installing the station in a partially shaded location will have an adverse effect on the battery lifetime and may limit the data transmission frequency.
- » Pick a spot you can easily access, as you may have to remove debris from the rain gauge bucket once or twice a year.
- » The station should ideally be mounted at least 5 ft (1.52 meters) above ground and away from roads, buildings and other sources of radiant heat.
- » The station should be well away from trees that could shade the station, block wind or create a natural umbrella.
- » For best results with a roof mount, install the station at the highest point on the roof.

Mounting Considerations:

- » The rain gauge must be level to provide accurate rainfall measurements. Ensure that your chosen mounting location is sturdy and does not sway in the wind with the additional weight of the station. Excess motion or tilting will greatly reduce the accuracy of rainfall measurements.
- » The assembled station weighs 8.4 lbs, but wind will increase loading on the mount. Mounting hardware is not included with the station.
- » In the Northern Hemisphere, the PV power panel must point south to capture maximum solar energy and for the anemometer to provide accurate wind direction. In the Southern Hemisphere, the panel should point north.



More siting and setup information is available at kestrelmet.net/support

2

Unboxing

What's included:

- » Pre-assembled station base; including rain gauge, air temperature, RH and barometric pressure sensors
- » Anemometer mast extension
- » Vane anemometer (wind speed and direction sensors)
- » Bird guard
- » Assembly tools: 5 mm hex key and #2 Phillips tool (Two spare screws included)
- » If you opted to purchase a Mono Mount, your package will include the Mono Mount parts.



3 Activating Data Plan & Registering Online

You must register your station at kestrelmet.net/welcome to activate the station's data plan:

- » Create a new account or log in to your existing account (fig A).
- » Follow the prompts to “Add Device” or choose “Devices” from the menu on the left (fig B).
- » Enter your KestrelMet 6000 MAC address which can be found on the last page of your manual or on the underside of the station.

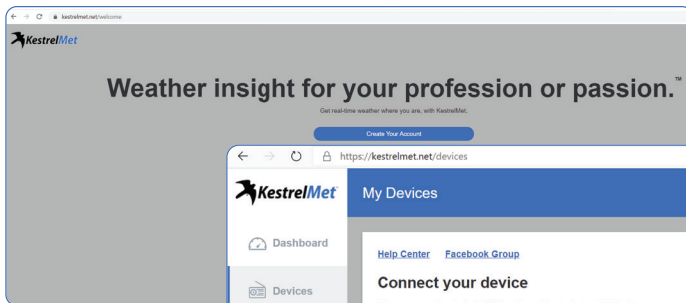


Figure A

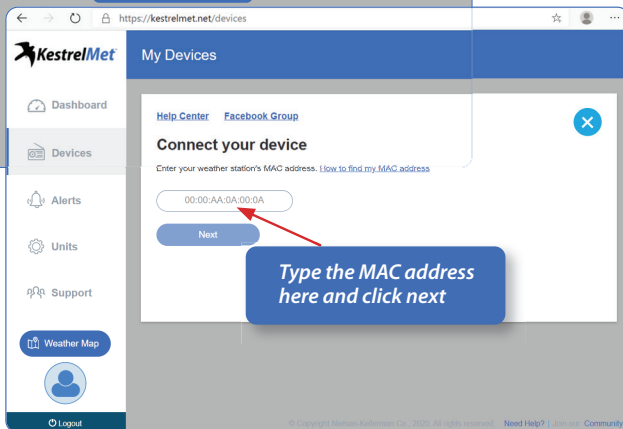


Figure B

4

Assembling Your Weather Station



IMPORTANT: Complete these steps before powering up your station so the sensors initiate correctly.

Assemble the Anemometer

- » Find the three screws on the anemometer mast extension. Remove and save the small Philips screw at the dimpled end (fig C).
- ✦ *This screw has a smaller head than the other two.*
- » Loosen the screw closest to the middle of the extension by three turns.
- » The non-dimpled end is marked with red tape. Remove the screw and the tape and save the screw for attaching to the station base (fig D).
- » Pull the anemometer cable out of the station base (fig E), and straighten the cable. Feed the cable into the end that was marked by red tape and continue to push the cable through the anemometer mast extension (fig F) while sliding the extension onto the station base so the connector comes out of the dimpled end (fig G).

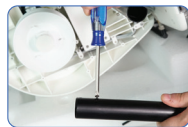


Figure C



Figure D



Figure E



Figure F



Figure G

Station Assembly

- » Rotate the anemometer mast extension until the screw aligns with the slot in the station base, then slide the screw all the way into the slot and hand tighten (fig H).
 - » Place the screw that was removed from the non-dimpled end of the mast (fig D) into the hole below the station base slot and hand-tighten it well.
 - » Plug the end of the cable into the anemometer. The red side should be closest to the hub's center and the black side closest to the hubwall (fig I).
 - » Slide the anemometer hub onto the anemometer mast extension with the slot oriented in line with the dimple as shown (fig J).
 - » Replace the screw that was removed from the dimpled end of the mast to secure the anemometer in place and handtighten with a Phillips screwdriver (fig K).
- *Spare screws are provided in the zip lock bag with the assembly tools.*



Figure H



Figure I



Figure J



Figure K

Station Assembly

Align the PV Panel

- » Slightly loosen the 5mm hex bolt with included wrench, adjust the PV power panel angle to match your latitude as indicated in the table below, then re-tighten the bolt (fig L).



Figure L

Latitude	Angle from vertical	Clicks from vertical
0–22.5	75°	5
22.5–55	45°	3
55–90	15°	1



0 Clicks



1 Click (15°)



2 Clicks



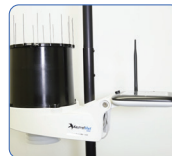
3 Clicks (45°)



4 Clicks



5 Clicks (75°)



6 Clicks

Station Assembly

Install the Bird Guard

✦ *This step can be done on-site after the station is mounted.*

- » Remove the protective plastic film from the PV panel (fig M)
- » Loosen the screw, set the bird guard on the rim of the rain gauge bucket with the spike holes facing up, then tighten the screw and insert the spikes (fig N).
- » There is a black cable on the underside of the station that can be used to connect additional KestrelMet sensors. The sensor connector is covered by a black cap which should be left in place (fig O). For more information, visit www.KestrelMet.com/Sensors
- » Birds can trigger false rainfall readings if they perch on the rain bucket. The bird guard prevents this.



Figure M



Figure N



Figure O



IMPORTANT: Exercise caution when installing the spikes.

5 Connection Status

Confirming Your Station is Online

- » Flip the toggle switch on the underside of the station base to “ON” (fig P).
- ✦ *It is best to minimize the number of On/Off cycles during station startup, as frequent switching can lead to cell modem connection delays.*
- » The LED light on the PV power panel will flash magenta. This means the station is attempting to connect to a cellular network.
- » The light will flash green when the station has successfully connected. Go to kestrelmet.net and check your dashboard to confirm your station is transmitting data from all sensors (fig Q).
- » Refer to the troubleshooting guide at the end of this manual if the LED indicator does not blink green within 20 minutes of turning the station on.

✓ To conserve power, turn the station off if you don't plan on mounting it within 12 hours.

In areas with poor cellular signal strength, you may need to optimize the station location and antenna configuration. Get detailed instructions on your station's signal strength indicators at kestrelmet.net/Support

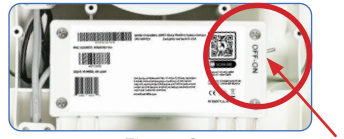


Figure P

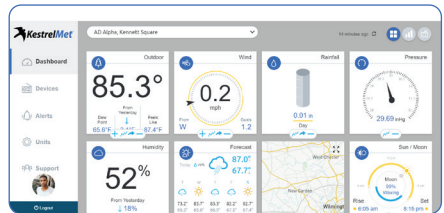
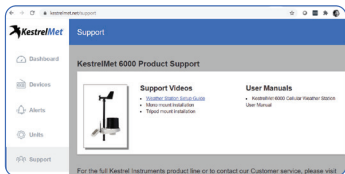


Figure Q

✦ **Note:** You may experience cellular service interruption due to weather, location, network limitations and other factors.

6 Mounting

Refer to kestrelmet.net/support



- » Mount the station. See *appendix for Mono Mount and Tripod Mount mechanical drawings (pgs 32-33)*. Find detailed instructions and installation videos at kestrelmet.net/Support
- » Confirm that the rain gauge bucket is level using one of these methods:
 - ✓ Place a level across the top of the rain bucket and take two readings perpendicular to each other (fig R & S).
 - ✓ Cover the rain gauge bucket drain with a piece of duct tape and add approx. 16 oz of water. If level, the edges of the water should be centered in the bottom of the bucket. Remove the tape to allow the water to pass through the drain and test the rain gauge (fig T).

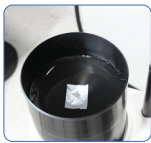


Figure T




Figure R



Figure S

Mounting Instructions:

- » Mount the support mast securely to the support structure using the Mono Mount or Tripod (sold separately) or standard U-bolts. Do not tighten the support structure to the KestrelMet, as directional orientation will be required.
 - » Rotate the assembled unit until the electronics enclosure with the solar panel cover faces south if you're in the Northern Hemisphere, or north if you're in the Southern Hemisphere. This will capture maximum solar energy and help the anemometer provide accurate wind direction. Use a compass for accuracy.
 - » Secure the support mast to the assembly. Prevent rotation by lining up the two holes in each mast
-  ***At this point, the entire unit should be secured to the support structure. It is crucial that the device is oriented as precisely as possible.***

7 Powering Up

After mounting the station, confirm the power is ON and the station is transmitting to **kestrelmet.net** as shown in figure U.

✦ *Data can take up to 15 minutes before it is shown on kestrelmet.net*

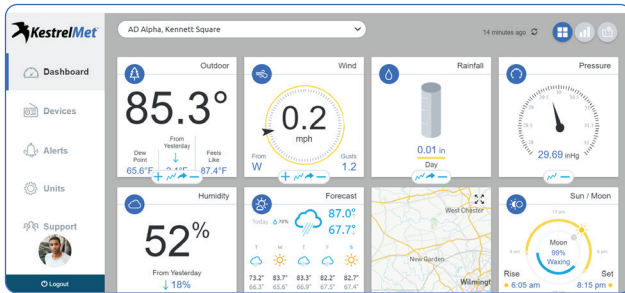


Figure U

Troubleshooting

Refer to kestrelmet.net/Support for FAQs and additional troubleshooting information

The KestrelMet 6000 cellular weather station can ONLY connect to a cellular network (typically Verizon or AT&T according to your station's SIM card for US customers), and cannot connect to a WiFi network. You can use provider coverage maps or third party tools such as the Open Signal app or RootMetrics app to plan an optimal location for your station. After your station is registered, you can use the signal indicators on kestrelmet.net/Devices for live cellular signal readings.

When power switch is flipped ON, the station will transmit once every 5 minutes for a period of 30 minutes and then revert to normal operation mode, transmitting every 15 minutes. During that time, the multicolor LED on the PV power panel will indicate the connection status:

Flashing **magenta** (every 10 seconds): Attempting to connect to a cellular network

Flashing **green** (every 10 seconds): Normal Operation

Flashing **blue** (every 10 seconds): Power Saver mode

Flashing **red** (every 10 seconds): Logging mode

Flashing **red** (every 20 seconds): Hibernation mode


The KestrelMet 6000 station is shipped with a fully charged battery and the station is designed to maintain normal operation in subfreezing weather. If solar charging is insufficient due to extended snow cover or installation in a shaded location, the station will change operating modes to conserve power as detailed in the station specifications operating mode table. In winter conditions, the rain gauge will not measure precipitation until the accumulated contents of the bucket have melted and drained through the strainer at the bottom of the bucket.



IMPORTANT: If the station enters hibernation mode due to a depleted battery, the station must be left turned “on” and placed in direct sunlight to recharge. When the battery is charged sufficiently (typically 1-3 days), the station will switch back to Logging mode, then Normal Operation mode as charging allows. You will receive an email notification when the station returns to Normal Operation mode.

Specifications

SENSORS	Accuracy (+/-)	Resolution	Range	Notes
Wind Speed	larger of 5% or 1 mph between 1 to 57 mph	0.1 mph 0.1 knot 0.1m/s 0.1 km/hr	1 to 100 mph 1 to 86.9 knots 1 to 44.7 m/s 1 to 160.9 km/hr	Wind speed is measured continuously and stored in station memory as a series of 2 second averages. The reported wind speed is the average over the 15 minute logging interval. The highest measured speed during the logging interval is reported as the gust value.
Wind Direction	2°	1°	1° ~ 360°	Wind direction is measured continuously and stored in station memory as a series of 2 second averages. The reported wind direction is the average scalar direction over the 15 minute logging interval. The gust direction is the average scalar direction for the 2 second record corresponding to the gust value.
Temperature	0.45° F 0.25° C	0.1° F 0.1° C	-40° to 140° F -40° to 60° C	Temperature is measured once per minute. The reported temperature is the average value for the 15 minute logging interval. High and low temperatures are based on the 1-minute readings.
Relative Humidity (typical)	1.5% between 0 - 80%	1%	0 to 100%	See fig T for accuracy tolerance over the RH range. Humidity is measured once per minute. The reported humidity is the average value for the 15 minute logging interval. High and low RH are based on the 1-minute readings.
Absolute Pressure	1.5 mbar/hPa 0.044 inHg 1.1 mmHg	0.1 mbar/hPa 0.01 inHg 0.1 mmHg	600 to 1100 mbar/hPa 17.72 to 32.48 inHg 450.0 to 825.1 mmHg	Pressure is measured once per minute. The reported pressure is the average value for the logging interval. High and low pressures are based on the 1-minute readings.
Rain Rate	5% at 2"/hr (5% upgradeable to 2%)	0.01 in/hr 0.1 mm/hr	0 to 7.8 in/hr	Rainfall is measured continuously in 0.2 mm increments (tipping bucket calibration volume)

 **NOTE:** Specifications for optional sensors can be found on the sensor product pages at [KestrelMet.com](https://www.kestrelmet.com).

Relative Humidity (typical)

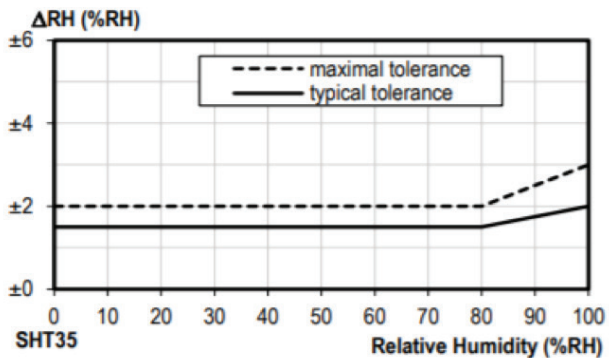


Figure T

SYSTEM

Operating Environment Temperature:	-40° to 140° F (-40° ~ 60°C)
Dimensions	11"x23"x36" (28 x 58 x 91 cm)
Weight	8.9 lbs (4.04 kg)
Certifications	FCC, CE, IC
Data Cache Capacity	365 Days
Logging Rate	Every 15 minutes (See sensor specification notes for details)
Cellular Transmission Rate	Every 15 minutes
Battery Type:	Non-Spillable 4V 4.5Ah AGM sealed lead-acid 1A peak, 12 mA typical
Battery Life:	2 to 5 Years typical
Cellular Modem Type:	CAT-M / NB-IoT
Solar Panel Type:	mono crystalline 7V 2.3 W
Warranty	2 Years

STATION OPERATING MODES	Standard	Power Saver	Logging	Hibernate	Recharge
Battery Status	Battery Charged	Low Battery	Critically Low Battery	Critically Low Battery	Critically Low Battery
Aspirated Sensor Measurement Frequency	1 min	2 mins	5 mins	None	None
Cellular Data Transmission Frequency	15 mins	15 mins	24 hrs	None	None
Panel LED Color	Green	Blue	Red	Red	None
LED Blink Frequency	10 sec	10 sec	10 sec	20 sec	None

Product and Safety Information



WARNING: Read and follow these guidelines to reduce the risk of injury or death.

- ✓ Fully read your KestrelMet 6000 user manual to familiarize yourself with the product's features before operating.
- ✓ Failure to operate this product correctly can damage it or produce inaccurate readings.
- ✓ Use good judgement whenever you rely on station readings to make decisions regarding safety, health or property protection.
- ✓ Allow a margin of safety for changing conditions and reading errors (2–3% of readings is recommended).

Be certain your weather station's accuracy has not been compromised by improper installation, contamination or damage. When in doubt, verify your weather station's accuracy against a known good standard for the measurement in question, and contact Kestrel Instruments Technical Support with any questions or concerns.



NOTICE: All instructions and associated documents are subject to change at the sole discretion of the manufacturer. For up-to-date product information, visit kestrelinstruments.com/support

Compliance



KestrelMet 6000 contains approved transceiver modules:

FCC IDs : MCQ-XB3M1, XPY2AGQN4NNN and A8TBM71S2

This product was type-tested and found to comply with the limits for a class B computing device in accordance with the specifications in Subpart J of Part 15 of FCC rules, designed to provide reasonable protection against such interference in residential installation. We make no guarantee that interference won't occur in a particular installation. If this equipment does cause interference to radio or television reception, which can be determined by turning the equipment off and on, try correcting the interference in one or more of these ways:

- » Reorient the receiving antenna.
- » Increase the separation between the equipment and the receiver.
- » Connect the equipment to an outlet on a circuit different from the one the receiver is connected to.
- » Contact the manufacturer or an experienced radio/television technician for additional help.

To satisfy FCC RF exposure requirements for mobile transmitting devices, a separation distance of 25 cm or more should be maintained between the antenna of this device and persons during device operation. To ensure compliance, operations at closer than this distance are not recommended. The antenna used for this transmitter must not be co-located in conjunction with any other antenna or transmitter.

While the antenna is detachable, the KestrelMet 6000 must only be used with the supplied antenna. Use of an unapproved antenna with regards to compliance and its ramifications will not be the responsibility of the manufacturer.



KestrelMet 6000 contains approved transceiver modules :

IC IDs: 1846A-XB3M1, 8595A-2AGQN4NNN and 12246A-BM71S2

This product was type-tested and found to comply with the limits for a class B computing device in accordance with the specifications in ICES-003 and Part 15 of FCC rules.

This device complies with Industry Canada license-exempt RSS standard(s). Operation is subject to the following two conditions: (1) this device may not cause interference, and (2) this device must accept any interference, including interference that may cause undesired operation of the device.

Le présent appareil est conforme aux CNR d'Industrie Canada applicables aux appareils radio exempts de licence. L'exploitation est autorisée aux deux conditions suivantes: (1) l'appareil ne doit pas produire de brouillage, et (2) l'utilisateur de l'appareil doit accepter tout brouillage radioélectrique subi, même si le brouillage est susceptible d'en compromettre le fonctionnement.

While the antenna is detachable, the KestrelMet 6000 must only be used with the supplied antenna. Use of an unapproved antenna with regards to compliance and its ramifications will not be the responsibility of the manufacturer.

CAUTION! This equipment is approved for mobile and base station transmitting devices only. Antenna(s) used for this transmitter must be installed to provide a separation distance of at least 25 cm from all persons and must not be co-located or operating in conjunction with any other antenna or transmitter.

ATTENTION! Cet équipement est approuvé pour la mobile et la station base dispositifs d'émission seulement Antenne(s) utilisé pour cet émetteur doit être installé pour fournir une distance de séparation d'au moins 25 cm à partir de toutes les personnes et ne doit pas être situé ou fonctionner en conjonction avec tout autre antenne ou émetteur.

Compliance



EU Declaration of Conformity

This product was tested and found to comply with EU Council Radio Equipment Directive 2014/53/EU (RED).

EN 61010-1, SAFETY REQUIREMENTS FOR ELECTRICAL EQUIPMENT

EN 55022, Enclosure of Ancillary Equipment

EN 61000-4-3, Radio Frequency Electromagnetic Field

EN 61000-4-2, Electrostatic Discharge

This product contains:

Digi International Modem, Model XB3M1, with a manufacturer

Declaration of Conformity to EU Council Radio Equipment Directive 2014/53/EU (RED).

Microchip Inc Bluetooth Module, Model RN4871, with a manufacturer

Declaration of Conformity to EU Council Radio Equipment Directive 2014/53/EU (RED).



RoHS (Reduction of Hazardous Substances) compliant.



Marked in accordance with the WEEE (Waste Electrical and Electronic Equipment) Directive.

Please do not dispose of the Kestrel batteries in your household trash. Return to NK, an NK dealer, or a designated recycling center for proper recycling and disposal.



Does not contain greater than >0.1% of the substances of Very High Concern (SVHC) on the REACH European Regulation on the Registration, Evaluation, Authorization and Restriction of Chemicals Candidate List.

CONTACT US AT

www.kestrelmet.net

Techsupport@nkhome.com

(800) 784-4221 Toll-Free North America

(610) 447-1555 Continental US

Proposition 65 Warning



WARNING: This product and/or its included or branded accessories can expose you to chemicals, including lead, lead compounds and phthalate DEHP, which are known to the State of California to cause cancer, and lead and lead compounds, bisphenol A (BPA), and phthalate DnHP, which are known to the State of California to cause birth defects or other reproductive harm. For more information, go to www.P65Warning.ca.gov.

More Information

Many of the elements listed under Proposition 65 are commonly found in products in the electronics industry. Although Kestrel Instruments' manufacturing process is "lead-free," it remains possible that small amounts of lead could be found in components or subassemblies. Bisphenol A (BPSA) could be found in plastic housings, lenses, labels or adhesives, and DEHP & DINP (phthalates) could be found in PVC wire coatings of cables, housings, carrying cases, an/or power cords. Because we cannot guarantee that these chemicals are never present, we have elected to place the warning on our products to ensure compliance with California law and our customers' right to know. While we have not attempted to evaluate exposure, we believe that normal consumer use of this product is unlikely to result in exposure that creates a significant risk of harm. For more information visit kestrelinstruments.com/Prop65 or contact us directly at techsupport@nkhome.com.

Warranty



Your **KestrelMet 6000 Cellular Weather Station** from Nielsen-Kellerman is warranted to be free of defects in materials and workmanship for a period of **TWO YEARS** from the date of its first consumer purchase. Nielsen-Kellerman agrees to repair or replace any defective damage due to the product or part when notified within the warranty period without charge.

The following are excluded from warranty coverage: damage due to improper use, abuse, accident and/or lack of reasonable care; improper storage, maintenance or handling (including corrosion); the fixing of any attachment not provided with the product; lightning strike and/or power surge.

Removal/reinstallation charges and any warranty service performed by a non-authorized repair service are also not covered. NK assumes no responsibility for any special, incidental or consequential damages and NK authorizes no other warranty, written or oral.

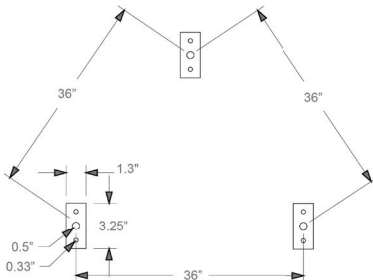
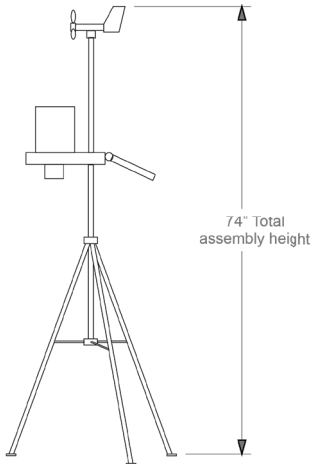
This warranty gives you specific legal rights, and you may have other rights, which vary from state to state. Some states do not allow the exclusion of incidental or consequential damages, and so the above exclusions and limitations may not apply to you.

To return a unit under warranty: Contact Nielsen-Kellerman for Return Authorization.

Make sure equipment is properly packed - preferably in the original box. Damage incurred in shipping is not covered under this warranty.

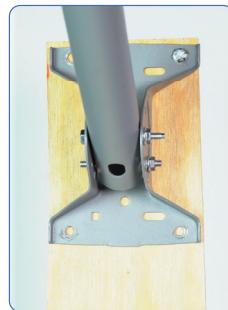
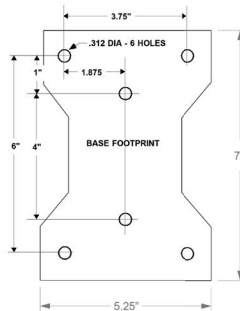
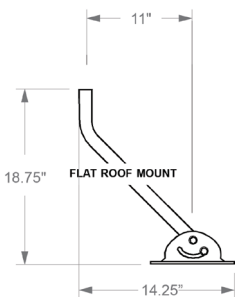
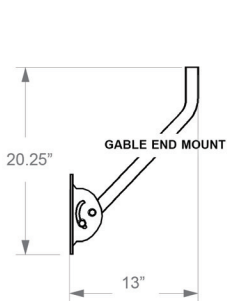
Appendix 1:

Tripod Mechanical Drawings



Appendix 2:

Mono Mount Mechanical Drawings



Appendix 3:

Optional AG Sensors



More Information at www.KestrelMet.com/AG

Solar Irradiance Sensor

The solar irradiance sensor comes pre-wired to the station, but the metal bracket needs to be attached to the station base.

In the plastic bag, you'll find two stainless steel Phillips head screws. Use these to attach the solar irradiance sensor bracket to station base. See red arrows in Fig 1.

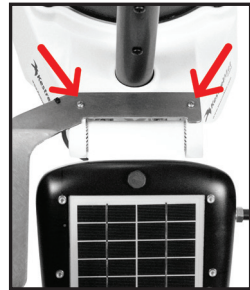


Figure 1

Soil Sensor Array

The soil sensor array consists of 3 probes, each on a 15' cable. Each probe measures soil water tension using a Watermark sensor and soil temperature. Probes are typically buried at 3 different depths corresponding to the root zone of the target vegetation.

Before connecting the soil sensor array, flip the power switch on the underside of the station to the "off" position. Remove the black protective cap from the silver aux sensor connector on the underside of the station.



Figure 2

Soil Sensor Array Connector

Align the ridge on the inside of the station connector with the channel on the soil sensor array connector (see red arrows). Press the two fittings together as you screw the threaded metal coupling together. You should feel detent ridges as the threads are tightened together completely. A completely tightened fitting may still have some threads showing between the two sides of the coupling, as shown on the far right in Fig 3. Once the coupling is tight, the station can be powered on and will begin transmitting soil temperature and soil water tension data. Note: Wrenches are not required to achieve a watertight connection.

The white housing of the soil array sensor can be attached to the lower section of the station mast using the provided zip ties. Take care to attach it so that there is no tension on the cable going to the station or on the cables connecting the soil probes.

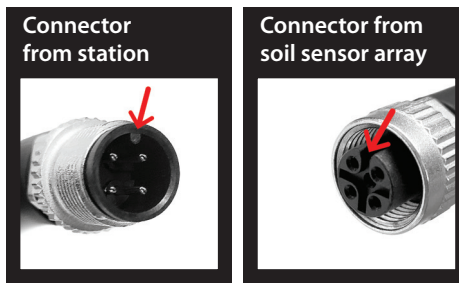


Figure 3



Figure 4

Soil Sensor Array Probe ID

Probe numbers are marked with zip ties as shown in Fig 5. (i.e. The probe with two zip ties will be displayed as Soil Moisture 2 / Soil Temperature 2 on your dashboard) Make a note of the depth for each probe. The sensor names on your KestrelMet.net dashboard can be edited to include the depth (i.e. Soil Moisture 36")

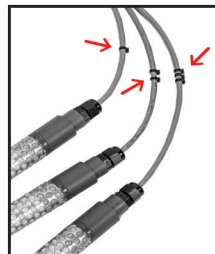


Figure 5

Soil Sensor Array Probe Placement Overview

Plan soil sensor array locations and probe depths according to your application. The recommended references in this manual provide guidance based on soil type, crop type, and irrigation options.

Recommended tools and supplies:

7/8" soil auger or coring tool, 3/8" dowel or rod, bucket, water jug, zip ties

Note: if seasonal sensor removal is required, 1" Sch 40 PVC pipe can be attached to each probe with provided adapters and screws. See red arrows in Fig 6.



Figure 6

1. Soak probes overnight in irrigation water. Several soak/dry cycles are recommended for new probes.
2. Cut dowel or 1" Sch 40 PVC pipe to desired lengths and mark target depth. If pipe is left in place, it should be capped.
3. Drill a 7/8" hole to the desired depth.
4. Prepare 2-3 cups of a soil slurry (no rocks or organic matter).
5. Pour slurry into hole to a depth of 2-3"
6. Insert soil probe into hole and press into the slurry.
7. Pour remaining slurry into the hole and tamp using the dowel.

Informational Videos



U of Nebraska
Watermark probe
installation



MMM consultants
Watermark probe
installation



U of Nebraska
irrigation scheduling
basics



U of Georgia
irrigation scheduling



Manuals and websites



KestrelMet.net
& Support



Manuals and websites:

The KestrelMet 6000 AG Weather Station helps farmers and operators maximize yields with the minimum required resources. Here you'll find helpful guidance and information regarding best practices in irrigation management.

Watermark installation manual

<https://www.irrometer.com/pdf/instruction-manuals/landscape/712%20InstallToolMnl%20web1.pdf>

Available Water Conversion Tables for Soil Moisture Monitors

<https://waterquality.montana.edu/farm-ranch/irrigation/irrigation-tools/shallow-conversion.html>

Irrigation Scheduling Strategies When Using Soil Water Data

<https://extensionpubs.unl.edu/publication/9000020403114/irrigation-scheduling-strategies-when-using-soil-water-data/>

How to use Watermark sensors for irrigation

<https://www.uaex.uada.edu/publications/pdf/FSA57.pdf>

Moisture Sensor Agricultural Irrigation Design Manual

<https://www.irrometer.com/pdf/supportmaterial/ADG2006.pdf>

Soil water tension irrigation criteria for various crops

<https://catalog.extension.oregonstate.edu/sites/catalog/files/project/pdf/em8900.pdf>

Watermark Granular Matrix Sensor to Measure Soil Matric Potential for Irrigation Management

<https://extensionpublications.unl.edu/assets/pdf/ec783.pdf>

Manufactured and Distributed by:

NIELSEN-KELLERMAN

21 Creek Circle, Boothwyn, PA 19061

Phone Continental US: (610) 447-1555

Phone International: (800) 784-4221

www.kestrelmet.net

info@kestrelmet.net



**PROUDLY DESIGNED
AND BUILT IN THE USA**