

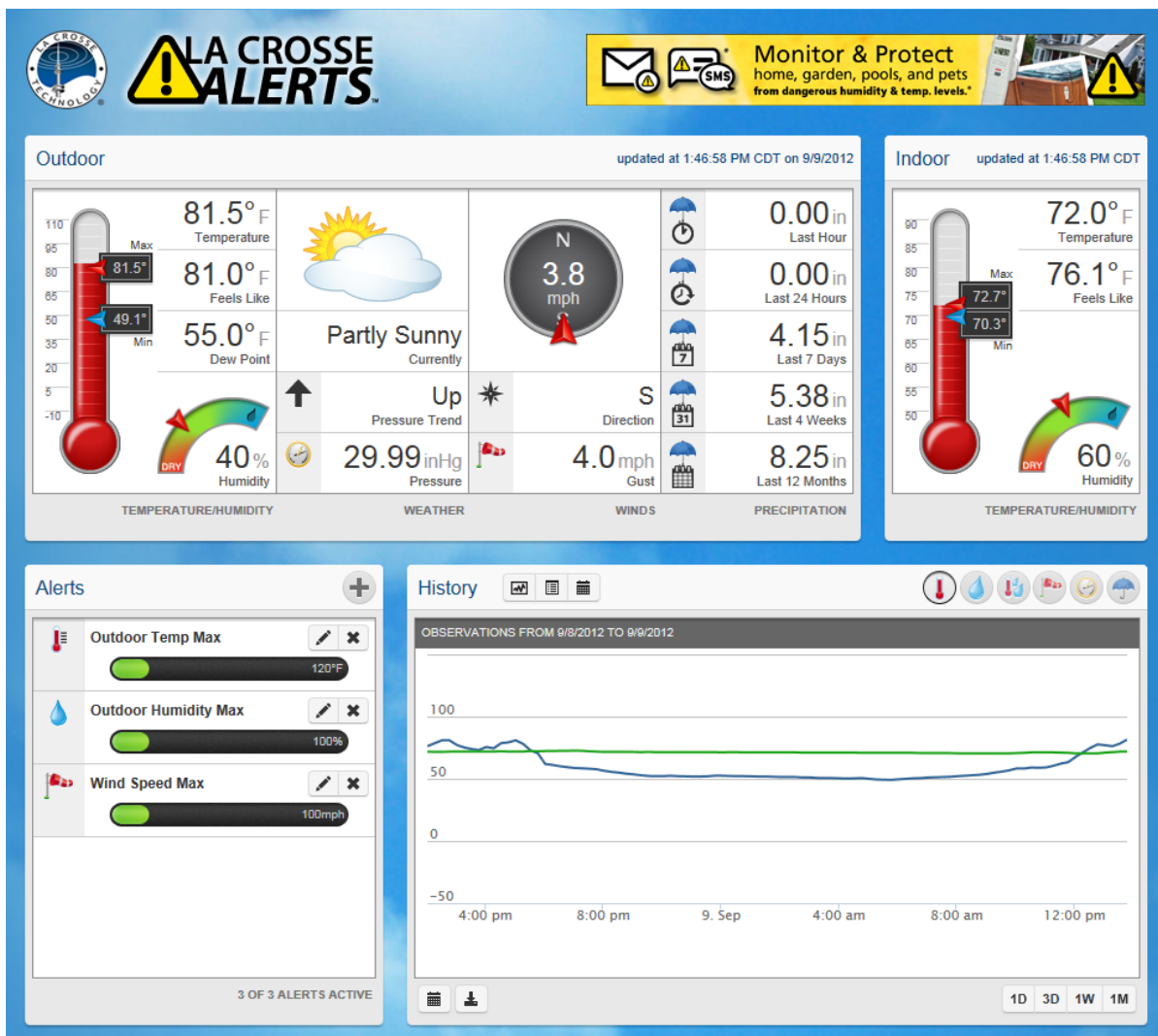
La Crosse Alerts PWS

User Guide

Introduction

Congratulations on purchasing a state-of-the-art La Crosse Technology weather station and La Crosse Alerts system!

Combined with the Heavy Weather Pro software, the La Crosse Alerts system allows you to monitor your backyard weather data from anywhere you have access to the internet. Monitor a variety of data such as wind gust and speed, indoor/outdoor temperature and humidity, air pressure and rainfall, from anywhere in the world! Review your weather history data, and analyze trends and tendencies over time using the La Crosse Alerts charts and graphing features, or export the data to a text file to save or analyze it however you want. Your weather data is at your fingertips, whenever or wherever you need it.



La Crosse Alerts PWS

User Guide

Table of Contents

[Introduction](#)

[Table of Contents](#)

[Installation](#)

[Preparing to install the La Crosse Alerts PWS software.](#)

[Installing the La Crosse Alerts PWS software](#)

[Prerequisites](#)

[Installing](#)

[The Interface](#)

[Outdoor Data](#)

[Temperature and Humidity](#)

[Temperature](#)

[Feels Like](#)

[Min and Max](#)

[Humidity](#)

[Weather \(Forecast Indicator and Pressure\)](#)

[Wind](#)

[Wind Direction](#)

[Wind Speed](#)

[Wind Gust](#)

[Precipitation \(Rain\)](#)

[Indoor Data](#)

[Temperature](#)

[Feels Like](#)

[Min and Max](#)

[Humidity](#)

[Alerts](#)

[Setting the Alert Contact Information](#)

[Creating an Alert](#)

[Send Alert After](#)

[Resend Alert After](#)

[History](#)

[History Data Types](#)

[History Data Views](#)

[Graph mode](#)

[Graph Range Selection](#)

[Station Settings](#)

La Crosse Alerts PWS

User Guide

Installation

For detailed instructions regarding installation of the La Crosse Alerts PWS service and software, please refer to the La Crosse Alerts PWS Quick Guide. Be sure to read the entire installation quick guide before starting to install the PWS service and software.

Preparing to install the La Crosse Alerts PWS software.

1. Setup the La Crosse Technology Professional Weather Station hardware.

For information about setting up your La Crosse Technology Professional Weather Station, please refer to the instructions that came with the hardware, or refer to the online documentation at:

<http://lacrossetechnology.com/alerts/pws/software/>

2. Install and configure Heavy Weather Pro.

For information about setting up the Heavy Weather software, please refer to our online support documentation at:

<http://lacrossetechnology.com/alerts/pws/software/heavy-weather-pro-user-manual.pdf>

- **IMPORTANT! The Heavy Weather software MUST complete writing all history records to the history.dat file before you run the La Crosse Alerts PWS service for the first time.**
 - To ensure that all available history records have been written to history.dat, you can check the Heavy Weather software:
 - On the main Heavy Weather page, at the bottom locate the “Data” link.
 - Click the “Data” link to switch the main window to the list of history records stored in the history.dat file.
 - If the last record in the list is close to the current time, you should be ready to upload your data to the La Crosse Alerts PWS website.
- 3. Get your La Crosse Alerts PWS service plan key. If you purchased a La Crosse Alerts Professional Weather Station with an included La Crosse Alerts service plan, you will have a service plan key in the package with your weather station.

If you need to purchase a service plan key, you can do so by visiting La Crosse Technology online at <http://store.lacrossetechnology.com/la-crosse-alerts/service-plans>.

4. Create your La Crosse Alerts account. You can create an account with La Crosse Alerts online at <http://www.lacrossealerts.com>. If you already have a La Crosse Alerts account, you can skip this step.
5. Register your weather station with La Crosse Alerts. When setting up your account at La Crosse Alerts, you will be asked to enter your service plan key and choose a station id

La Crosse Alerts PWS

User Guide

for your weather station. **Remember these, because you will need them again when you set up your La Crosse Alerts PWS software.**

Installing the La Crosse Alerts PWS software

Prerequisites

- You will need admin rights to be able to install this software.
 - Log in as a user with admin rights.
 - Enter the admin password when the install asks for it.
- You will need the Weather Station info that you used when setting up your La Crosse Alerts PWS account
 - Service Plan key
 - Weather Station Id

Installing

Run the La Crosse Alerts PWS install package (LAPWSInstall.exe).

When the installer presents the page asking for your Service Plan key and Weather Station Id:

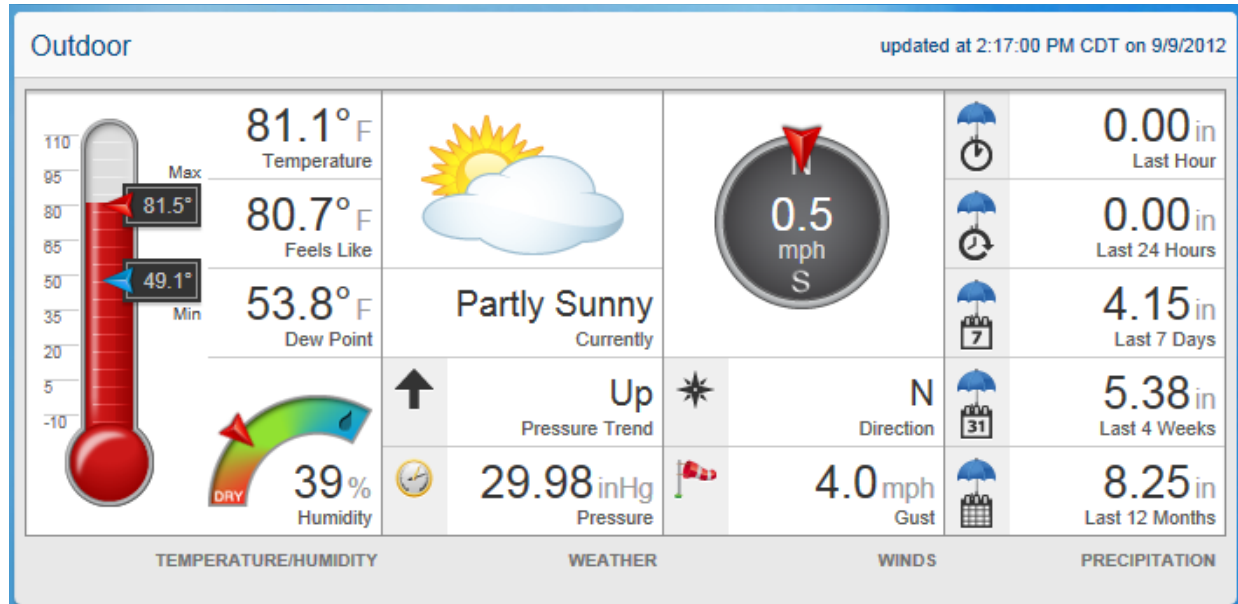
- Enter your La Crosse Alerts PWS Service Plan key.
- Enter the station id you chose when registering your weather station online at La Crosse Alerts.
- Choose the model of your weather station (found on the back of the weather station display unit).
- If you know the location of your history.dat file, you can enter it or browse to it's location. This step is optional, as the service will attempt to locate the history.dat file when it starts.

La Crosse Alerts PWS

User Guide

The Interface

Outdoor Data



The upper left section of the main screen displays the outdoor weather data. The data displayed is current as of the time and data shown at the top right of the Outdoor data section after the words “updated at”.

Temperature and Humidity

The left section of the Outdoor data displays the temperature and humidity data from your weather station.

Temperature

The “Temperature” value is the actual temp measured by the weather station. This value is also represented on the thermometer image by the height of the red gradient.

Feels Like

The “Feels Like” value is the adjusted temp calculated using either wind chill or heat index, depending on the actual temperature.

Min and Max

The minimum and maximum temperatures are displayed on the thermometer image. The maximum temperature is indicated with the red arrow, and the minimum temperature is indicated by the blue arrow.

Humidity

The humidity region displays the actual measured humidity, as well as a gradient indicating relative moisture vapor in the air.

Weather (Forecast Indicator and Pressure)

La Crosse Alerts PWS

User Guide

The forecast is determined from sudden or significant changes in the air pressure. The weather icon will update accordingly to represent the change in weather.

The displayed icon forecasts the weather in terms of getting better or worse and not necessarily sunny or rainy as each icon indicates.

If the icon does not change, either the air pressure has not changed or the change has been too small for the Weather Center to register. You can adjust the "sensitivity" of the pressure change in the weather station (see your weather station's user documentation).

Note: After setting up your weather station, readings for weather forecasts should be disregarded for the next 48-60 hours. This will allow sufficient time for the Weather station to collect air pressure data at a constant altitude and therefore result in a more accurate forecast. If the Weather Center is moved to another location significantly higher or lower than its initial standing point (for example from the ground floor to the upper floors of a house), discard the weather forecast for the next 48-60 hours, as the Weather Center may mistake the new location as being a possible change in air-pressure when really it is due to the slight change of altitude.



Common to weather forecasting, absolute accuracy cannot be guaranteed. The weather forecasting feature of your weather station and La Crosse Alerts is estimated to have an accuracy level of about 75% due to the varying areas the weather station has been designed for use. 75% accuracy is comparable to the best meteorological forecasting rate. In areas that experience sudden changes in weather (for example from sunny to rain), the Weather Center will be more accurate compared to use in areas where the weather is stable most of the time (for example mostly sunny).

La Crosse Alerts PWS

User Guide

Wind

The wind region of the outdoor data displays the current wind speed, direction and the calculated gust value.

Wind Direction

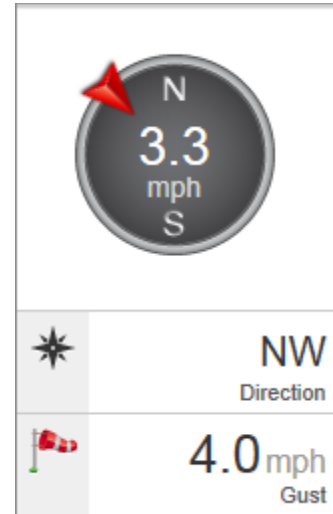
The wind direction is indicated by the direction section under the compass, and also by the position of the red arrow on the compass.

Wind Speed

The wind speed is displayed as the white numbers inside the compass. The units of measure are displayed directly beneath the speed.

Wind Gust

The wind gust value is located in the lower section of the wind region. Wind gust is calculated as the highest wind speed measured and reported by the weather station in the last hour.



Precipitation (Rain)

The rain section displays the rain measurements recorded by the weather station over the last hour, last 24 hours, last 7 days, last 4 weeks and the last 12 months. These values are calculated from the current date/time back relative to the measurement period. In other words, the Last 7 Days value is the amount of rain measured by the weather station from the date/time displayed at the top of the outdoor section going back 7 days.

La Crosse Alerts PWS

User Guide

Indoor Data

The upper right section of the main screen displays the indoor weather data. The data displayed is current as of the time and data shown at the top right of the Indoor data section after the words “updated at”.

Temperature

The “Temperature” value is the actual temp measured by the weather station. This value is also represented on the thermometer image by the height of the red gradient.

Feels Like

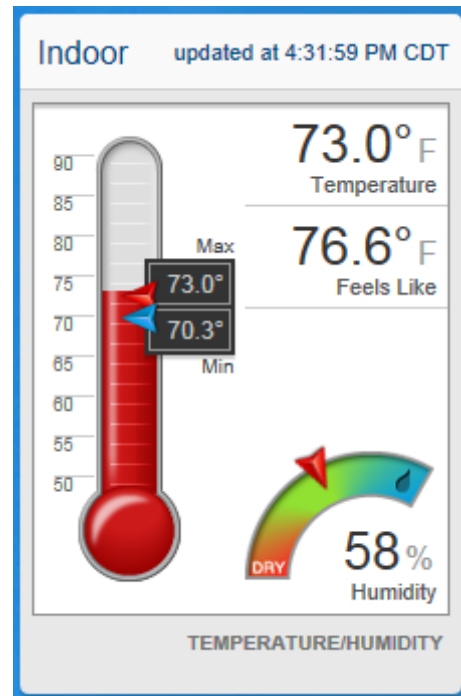
The “Feels Like” value is the adjusted temp calculated using either wind chill or heat index, depending on the actual temperature.

Min and Max

The minimum and maximum temperatures are displayed on the thermometer image. The maximum temperature is indicated with the red arrow, and the minimum temperature is indicated by the blue arrow.

Humidity

The humidity region displays the actual measured humidity, as well as a gradient indicating relative moisture vapor in the air.



La Crosse Alerts PWS

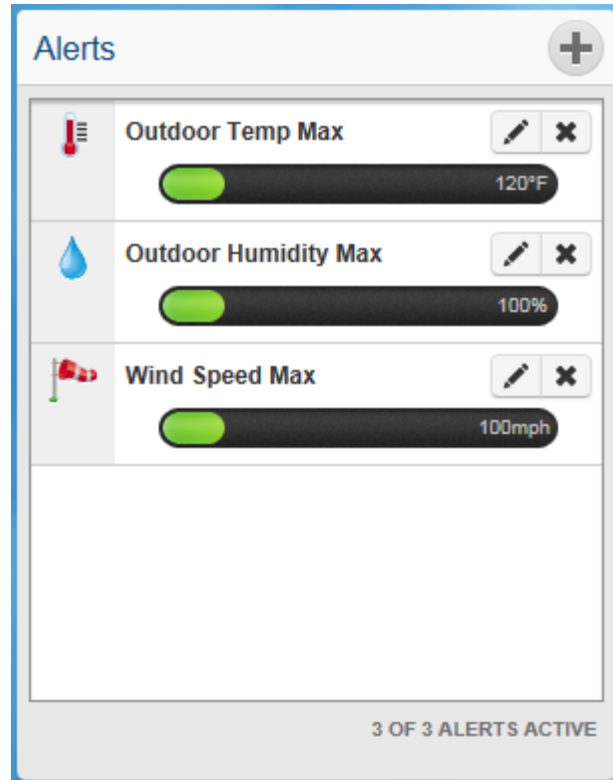
User Guide

Alerts

The La Crosse Alerts PWS system can be configured to notify you of changing conditions in the weather reported from your weather station.

Alerts can be configured for:

- Outdoor Temperature
- Indoor Temperature
- Outdoor Humidity
- Indoor Humidity
- Wind Speed
- Wind Direction
- Pressure
- Pressure Trend
- Rainfall



La Crosse Alerts PWS

User Guide

Setting the Alert Contact Information

Alerting Contact Information

Alert Email

Registered alerts will be sent to this email

Mobile Phone Alert Number

Alerts will be sent to this number via Text Message/SMS

Mobile Phone Carrier

Your SMS service provider, your cell phone company. For help, see:
[Wikipedia's List of SMS gateways](#)

*See the license agreement for billing rate information

To configure your alert contact information, go locate and click the "Profile" link at the top of the La Crosse Alerts page.

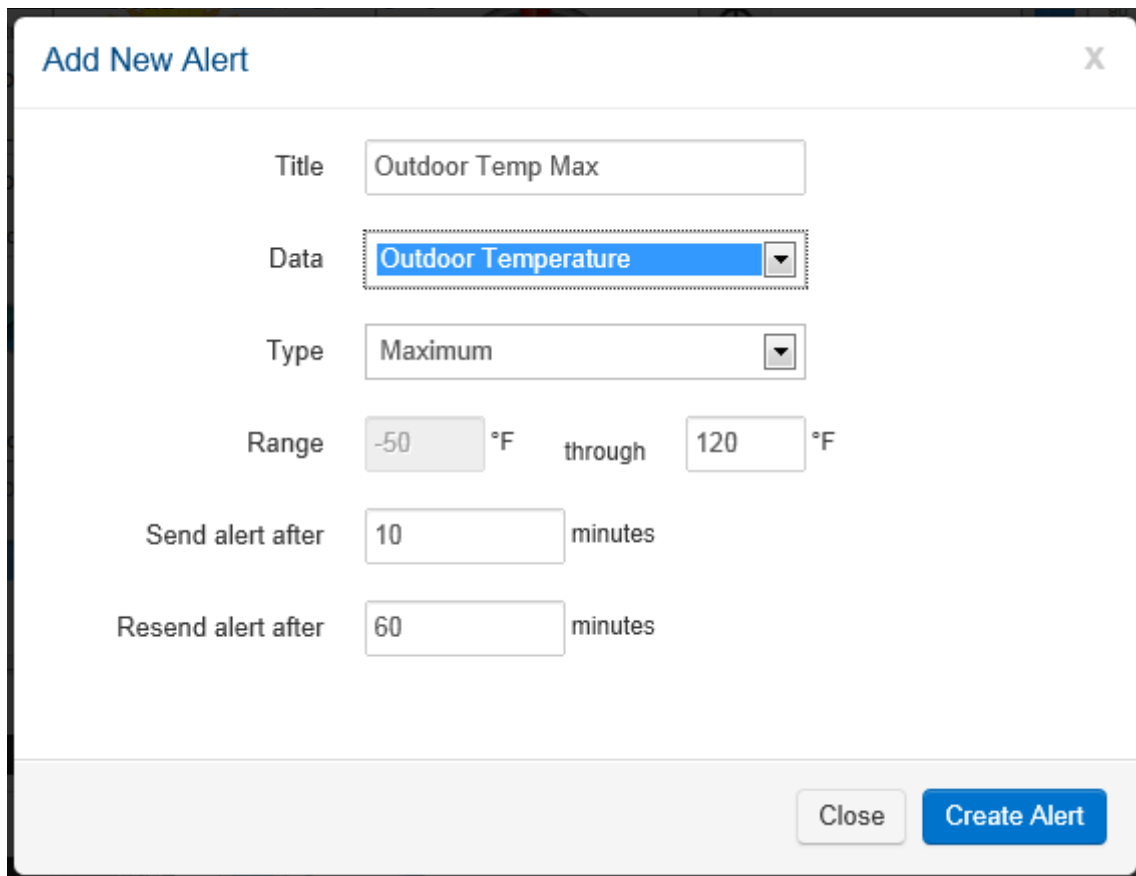
The lower section of the profile page is where you configure the email and/or mobile phone information that will be used when an alert is sent.

La Crosse Alerts PWS

User Guide

Creating an Alert

To create a new alert, click the plus icon at the top of the Alerts section. The “Add New Alert” screen will appear. Choose the type of weather condition you wish to be notified for, and the alert parameter(s) that will trigger the alert.



The screenshot shows a modal window titled "Add New Alert" with a close button (X) in the top right corner. The form contains the following fields:

- Title:** A text input field containing "Outdoor Temp Max".
- Data:** A dropdown menu with "Outdoor Temperature" selected and highlighted in blue.
- Type:** A dropdown menu with "Maximum" selected.
- Range:** Two input fields for temperature values. The first is "-50" followed by "°F", and the second is "120" followed by "°F", with the word "through" between them.
- Send alert after:** An input field containing "10" followed by "minutes".
- Resend alert after:** An input field containing "60" followed by "minutes".

At the bottom right of the form, there are two buttons: a "Close" button and a blue "Create Alert" button.

Select the weather data type you wish to alerted for, and set the alert condition of that data type.

Send Alert After

This value will delay the initial send for the specified number of minutes. This can be used to avoid getting several alerts, if the data value is hovering near the alert setting.

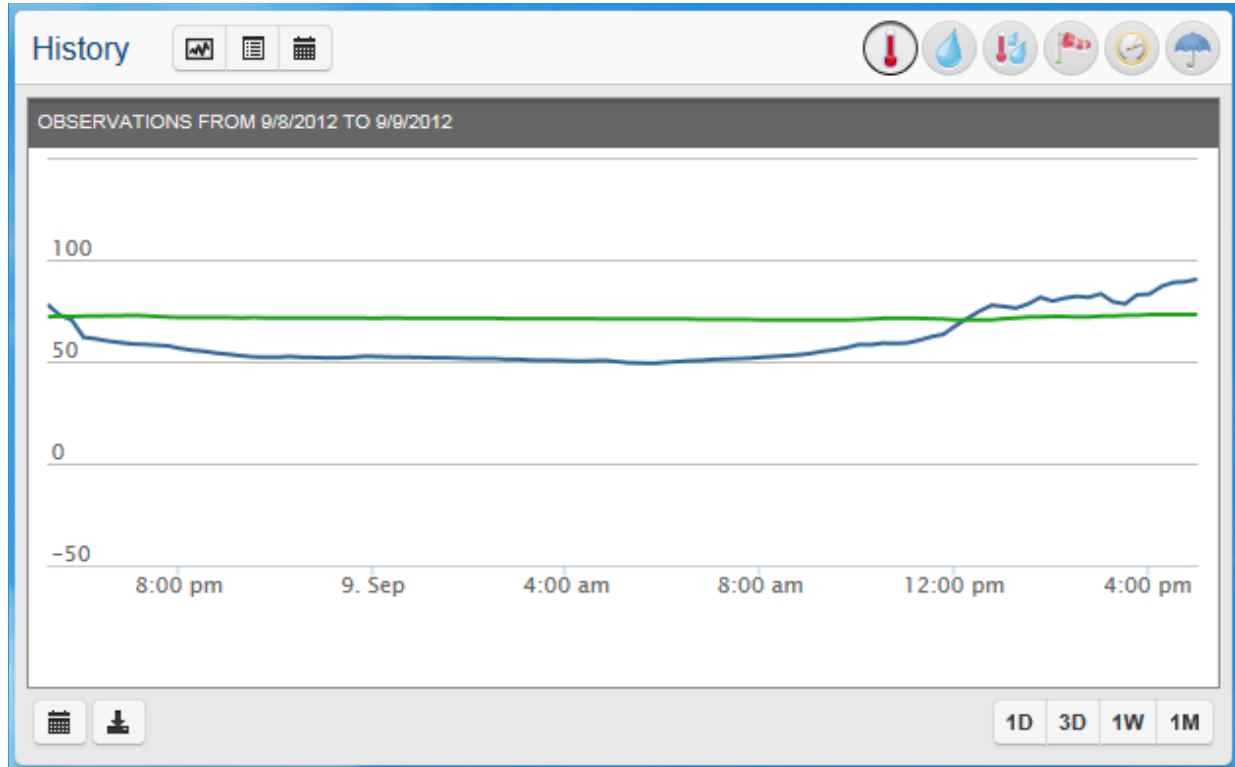
Resend Alert After

This value will stop the system from sending a duplicate alert until the value duration has expired.

La Crosse Alerts PWS

User Guide

History



The History section of the La Crosse Alerts PWS is where you can review the data collected by the weather station over a period of time.

History Data Types



Data history for the following data types can be viewed (from left to right):

- Temperature
- Humidity
- Dew Point
- Wind
- Pressure
- Precipitation

To see details regarding the data points on the graph, position the mouse cursor over the data line. A popup window will appear with the details of that specific point on the data line.

La Crosse Alerts PWS

User Guide



Where appropriate, both indoor and outdoor values will be displayed on the same graph using different color lines.

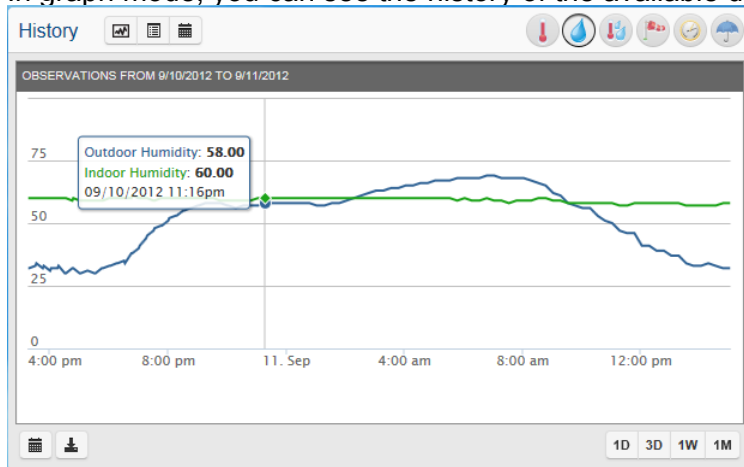
History Data Views



The history data can be viewed in three different modes: Graph mode (the default), Tabular and Almanac.

Graph mode

In graph mode, you can see the history of the available data types plotted out in the chart.



The type of data being displayed is indicated by the dark circle around one of the data type icons in the upper right. In the image above, the humidity icon is highlighted and the humidity data is displayed in the graph.

Graph Range Selection

When in Graph mode, you can choose to view data over longer periods of time.



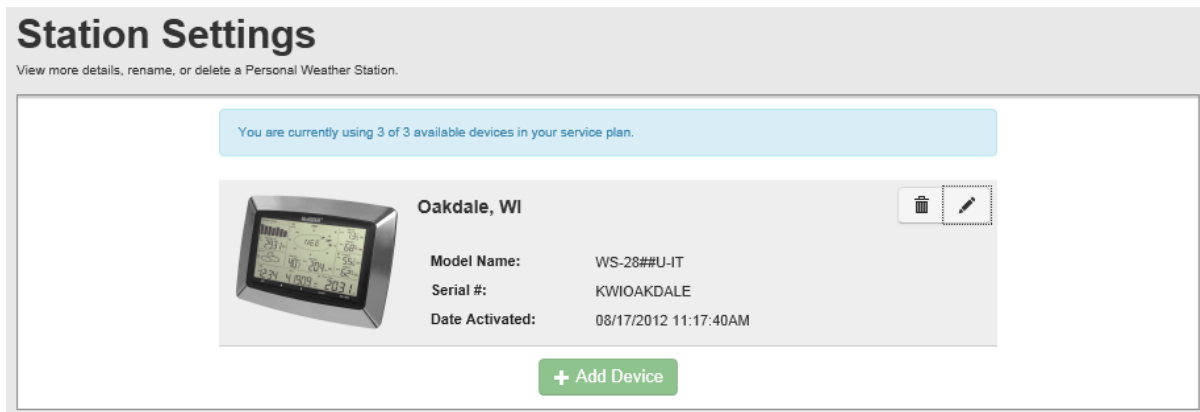
The ranges to choose from are 1day (the default), 3 days, 1 week or 1 month. The data displayed calculated from the current date, back the chosen time period.

La Crosse Alerts PWS

User Guide

Station Settings

A few of the settings for your weather station account can be modified through the Station Settings screen. To get to the Station Settings screen, click the “Devices” link at the top of the website and choose “Settings”.



Next click the Edit Device button, which looks like a pencil. The Edit Device screen will appear.

Help!' At the bottom of the form is a blue 'Save' button." data-bbox="129 477 864 810"/>

From the Edit Device screen, you are able to rename your weather station web page, update the model and copy either the Station Id or the Synch Code.

La Crosse Alerts PWS

User Guide

NOTE: The Station Id and Synch Code are the same values that are needed when configuring the La Crosse Alerts PWS service on the PC sending data from your weather station.