



# Weems Stormglass

*Operating Instructions*

**Weems & Plath®**

**Before using:** “start” the stormglass weather forecasting feature by shaking the stormglass up & down for 10-15 seconds. \*

## Mounting options:

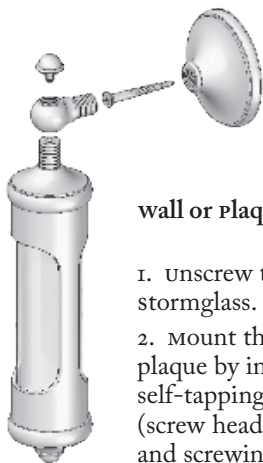
**standing mode - to secure the stormglass to a counter or shelf:**



1. Unscrew the base from the stormglass.
2. Insert the enclosed self-tapping screw into the base (screw head nests inside base) and screw it into the counter or shelf.
3. Carefully screw the stormglass onto the base.

\*(Note: if it has been shipped to you via air, it may take 24-48 hours to adjust to the local conditions)

Lifetime Warranty



### Wall or Plaque Mounting:

1. Unscrew the base from the stormglass.
2. Mount the base to a wall or plaque by inserting the enclosed self-tapping screw into the base (screw head nests inside the base) and screwing it into the wall/ plaque.

3. Find the “mounting accessory” (in the packaging - it has an internally threaded ring attached to an externally threaded post) carefully screw the accessory’s post into the mounted base until snug. You may need to rotate the mounted base slightly so the stormglass is vertical once mounted.



4. Invert the stormglass and carefully screw its post into the accessory’s ring.

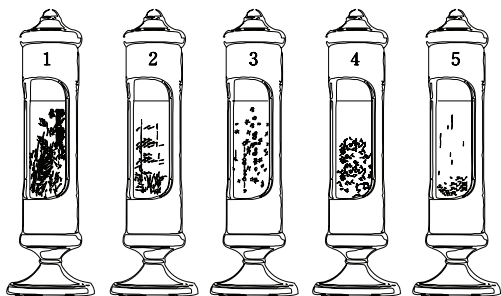
5. Position the stormglass at the preferred viewing angle, then lock that position by screwing the enclosed finial (brass cap with threaded post) into the top of the accessory until snug. (Caution: If you plan to unscrew it in the future, don’t tighten the finial too much).



6. Enjoy your weems stormglass!

## THE WEEMS STORMGLASS MYSTERIOUS WEATHER PREDICTOR

Since the 1700's this interesting device has been used for predicting the weather one to two days in advance. It requires no batteries or programming and it works indoors or out. Changes occur in the crystal formations from day to day that signify what weather changes to expect.



1. Fernlike crystals building up
2. Fernlike crystals disappearing
3. Star crystals are falling down
4. Star crystals all over
5. Clear liquid

Stormy  
Improving Weather  
Frost  
Rain  
Clear & Dry

**Weems & Plath®**

Available as an engraved plaque to accompany Stormglass

Weems & Plath, Inc.  
214 Eastern Avenue  
Annapolis, MD 21403  
[www.weems-plath.com](http://www.weems-plath.com)  
[www.conantcustombrass.com](http://www.conantcustombrass.com)

# The weems & Plath® story

In May of 1919, eight years before Lindbergh's famous solo flight, three small planes set out from Rockaway Naval Airstation, NY headed for Plymouth, England in an attempt to make the first trans-Atlantic flight. Only one of them made it. Twenty-five hundred feet below on board a station tracking ship, a young navigator, Lt. cdr. Philip van Horn weems, U.S. Navy, gazed up and thought there must be a safer and simpler way than using a small armada of ships as beacons for the flight.

For centuries, man had relied on the heavens, on the circling planets and the constant horizon to guide him in



Capt. Philip Van Horn Weems

his travels. An accurate clock, a compass, a sextant and charts were the necessary tools for plotting a course, but these required time for computations and a place to spread out and study the charts. The timeworn system of celestial navigation was ill suited to the cockpit, but the airplane was here to stay. Lt. cdr. weems, a brilliant, inventive and determined young man knew as he tracked that first flight that navigation

was his destiny, and he went on to revolutionize the field with his ideas, writings and inventions.

The challenge he undertook was complex and involved the invention of new methods and new tools. It required a horizon system independent of the sea horizon that was often not visible from the cockpit of a plane. weems worked for years to develop a new kind of sextant and to find someone to manufacture it. When an accurate timepiece was needed, weems invented the second setting watch with its inner rotating dial. He produced the famous weems plotter, the more precise and easier to use plotting tool, which is still one of our most popular plotters.

All his life, weems continued to improve the instruments and broaden the applications of his methods until they came to include radio astronomy, polar exploration and even space navigation. He published numerous articles and taught navigation at the Naval Academy in the 1920's. He went on to establish his own school in Annapolis to teach The weems system of navigation. Charles Lindbergh studied with weems before attempting his trans-Atlantic flight. Admiral Byrd, a classmate of weems at the Naval Academy, came to weems for instruction before setting out for the North Pole, as did many others.

A century earlier, Carl Plath's company in Hamburg, Germany - C. Plath, had been manufacturing the finest commercial sextants and magnetic compasses available. C. Plath developed the first gyrocompass installed on a commercial vessel in 1913. Weems' school for navigation had become the purveyor of weems' instruments. It was a natural development for weems' company to become the



Carl Plath

North American source for C. Plath's fine instruments; hence the alliance of two distinguished names - weems and Plath. The exceptional workmanship that both Philip van Horn weems and Carl Plath required in developing the manufacturing of precision navigation tools remains at the heart of all our products today.

Today, weems & Plath is still located in the Chesapeake Bay town of Annapolis where it began so many years ago. We are committed to supplying the world with the finest nautical products available while maintaining the high standards of service that have distinguished weems & Plath from its inception.